

Under the High Patronage of
Mr Emmanuel MACRON
President of the French Republic

SANCTUARY

In partnership with
NASA

With the support of
 **unesco**

PRESS KIT

// Beyond my background as an engineer, I take special pride in my Burgundian roots, especially my hometown of Nuits-Saint-Georges in the Côte-d'Or region.

While the region is renowned worldwide for its vineyards, it boasts an even more celestial distinction: an astonishing connection to the Moon through two lunar craters. The story began in 1845 with the birth of Félix Tisserand in Nuits-Saint-Georges.

His significant contributions to cometary research and the development of the "Tisserand parameter" cemented his legacy as a celebrated astronomer. In 1935, his contributions were immortalized when a lunar crater was named in his honor.

Decades later, in 1971, the Apollo 15 astronauts further bridged the gap between my small town and the stars by naming a crater in their landing area the St. Georges Crater. As I grew up, I realized that part of my town existed among the stars. This inspired my lifelong fascination with space exploration.

This passion soon led me to a transformative discovery—reading Carl Sagan's *Murmurs of Earth*. In the book, Sagan, the visionary behind the Pioneer plaques and the Voyager Golden Record, recounts the meticulous genesis of these interstellar artifacts. He describes how a small,

dedicated team spent months distilling the essence of humanity into a collection of images, sounds, and music intended for an extraterrestrial audience.

Inspired by the idea of transmitting information across vast distances of time and space, I started thinking about how we could design a "version 2.0" for the modern age. Driven by the desire to leave a legacy for our own descendants in the distant future rather than for extraterrestrial civilizations, I conceived the epic "Sanctuary on the Moon."

Much like Carl Sagan before me, I assembled a team of scientists, researchers, and experts to define our core mission of distilling the essence of who we are, what we know, and what we have achieved as a species. Once our foundation was established, we faced the monumental challenge of securing a space mission.

With recommendations from prestigious organizations such as CNES, CEA, INRIA, and UNESCO, we took a "shot in the dark" by asking NASA to include our project in an upcoming mission. That gamble paid off: Sanctuary has officially been integrated into the payload for the Artemis program. Our dream of archiving a compendium of humanity on the lunar surface is now a reality, with a launch scheduled for 2030. //

BENOÎT FAIVELEY

Founder - Sanctuary On The Moon

SANCTUARY AT A GLANCE

SHARING OUR HUMANITY TO IMMORTALIZE IT



THE SANCTUARY PROJECT IS A TIME CAPSULE THAT WILL BE SENT TO THE MOON BY 2030.



IT CONSISTS OF 24 LASER-ENGRAVED SAPPHIRE DISCS CONTAINING HUMAN KNOWLEDGE AND ACHIEVEMENTS ON A MICROMETRIC SCALE.



THE DISCS WILL BE STORED IN A SECURE ALUMINUM CONTAINER ATTACHED TO A MOON LANDER PROVIDED BY NASA.



EACH DISC WILL CONTAIN 3.5 TO 7 BILLION PIXELS OF INFORMATION, FOR A TOTAL OF OVER 100 BILLION PIXELS.



SANCTUARY TELLS THE STORY OF HUMANITY **IN THREE CHAPTERS**

WHO WE ARE

Our “biological recipe” is engraved forever. Two human genomes—one male and one female—were randomly selected from the global population. For the first time in history, humanity's “biological recipe” will leave Earth.

WHAT WE KNOW

The fundamental sciences that structure our understanding of the world. Five discs are currently being finalized: Matter, Space, Water, Life, and Time. Each disc uses images, diagrams, and narrated data to illustrate our scientific knowledge.

WHAT WE MAKE

Art, culture, UNESCO World Heritage. This third and final phase opens in February 2026. It will bring together artists and cultural and educational institutions to create a record of our shared humanity.

OUR MISSION

**LEAVE A MARK FOR THE FUTURE IN SPACE
OPEN A WINDOW ON THE PRESENT ON EARTH**



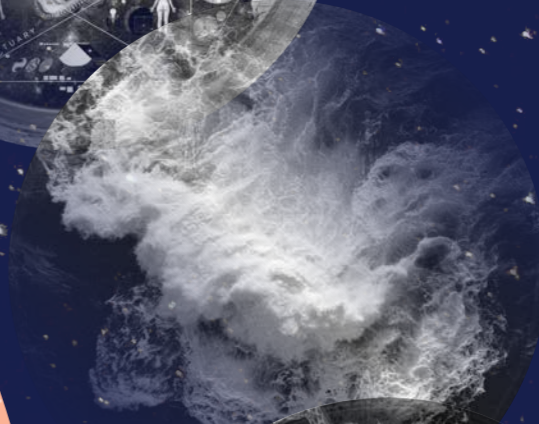
SANCTUARY IS A COMPENDIUM OF OUR HUMANITY FOR ETERNITY TO BE PLACED ON THE MOON



Disc No. 1
Matter and Atoms



Disc No. 2
Space and the Universe



Disc No. 3
Water and the Sea



Disc No. 4
Life and Biology



Disc No. 5
Time and Age



Disc No. 6
Female Genome #1

SCALE



M/S²

ACCELERATION DERIVED

ELECTRIC CHARGE

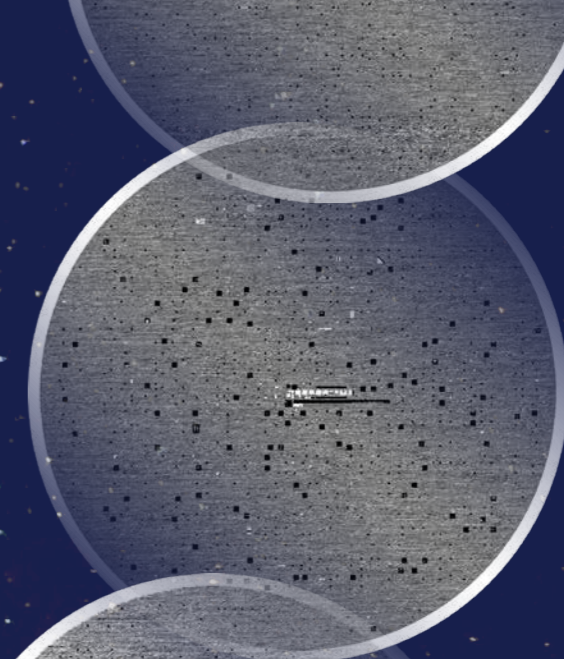
$\frac{H}{O} = \frac{H}{O} + E$

2 * 10¹³ GEV⁻¹H
2 * 10²⁴ GEV⁻¹H
2 * 10²³ GEV H/C²
2 * 10² GEV
2 * 10⁹ GEV
2 * 10⁻¹⁴ GEV⁻¹/K_B

2 * 10⁻¹⁰ J
5 * 10¹³ K
2 * 10⁻²⁷ KG
2 * 10⁻¹⁶ M
2 * 10⁻²⁵ S

73325190608E * 10⁻²⁷ KG
6218992(20) * 10⁻²⁷ KG
76624 X 10⁻¹⁹ C
78356(10) * 10⁻²⁷ KG
10⁻¹⁹ C

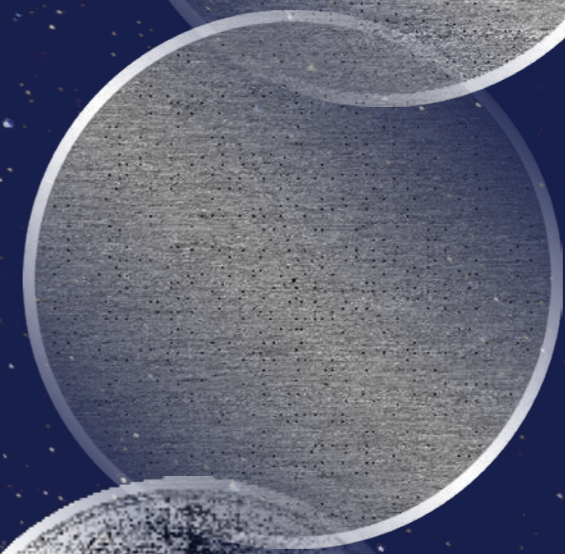
For reference:
a hair is 10 times wider.



Disc No. 7
Female genome #2



Disc No. 8
Male genome #1



Disc No. 9
Male genome #2



Disc No. 10
Society

THE PIXELS

The problem with storing information on digital devices such as hard drives, CDs, DVDs, and USB drives is that the information must be decrypted using complex and fragile equipment.

Our sapphire discs will contain tiny pixels measuring between 1 and 1.4 microns per pixel, totaling of over 100 billion pixels. The advantage of our method is that all of the information contained on the discs can be read with the naked eye or with a magnifying glass.

Furthermore, the pixels are not made of pigments that can fade over time or under extreme temperatures. The pixels are physically engraved in one of the hardest materials in the world, so we know they will last millions of years.



THE MATERIAL

The background of the entire page is a warm, orange-toned photograph. In the center, a magnifying glass with a black handle is held over a circular sapphire disc. The disc's surface is covered in intricate, micro-etched patterns, including what appears to be a grid, a crosshair, and some illegible text or data. The magnifying glass's lens is positioned to enlarge a portion of the disc, highlighting the fine details of the etching. The background also shows other similar discs, some in a tray, and a perforated metal surface, suggesting a laboratory or manufacturing environment.

These 100-mm-diameter, 1-mm-thick discs are made from industrial sapphire. With a hardness of 9.0 on the Mohs scale, sapphire is one of the hardest known materials; diamonds have a hardness of 10.

Sapphire can withstand the extreme temperatures of the lunar surface and remain unchanged over time. The information is micro-engraved in a physical, non-coded format. Therefore, the legibility of the engraved data will not depend on future technological innovations. Arnano, a company that specializes in nanoscale precision engraving on highly resistant materials, mainly sapphire, engraves the discs.

OUR CONTAINER

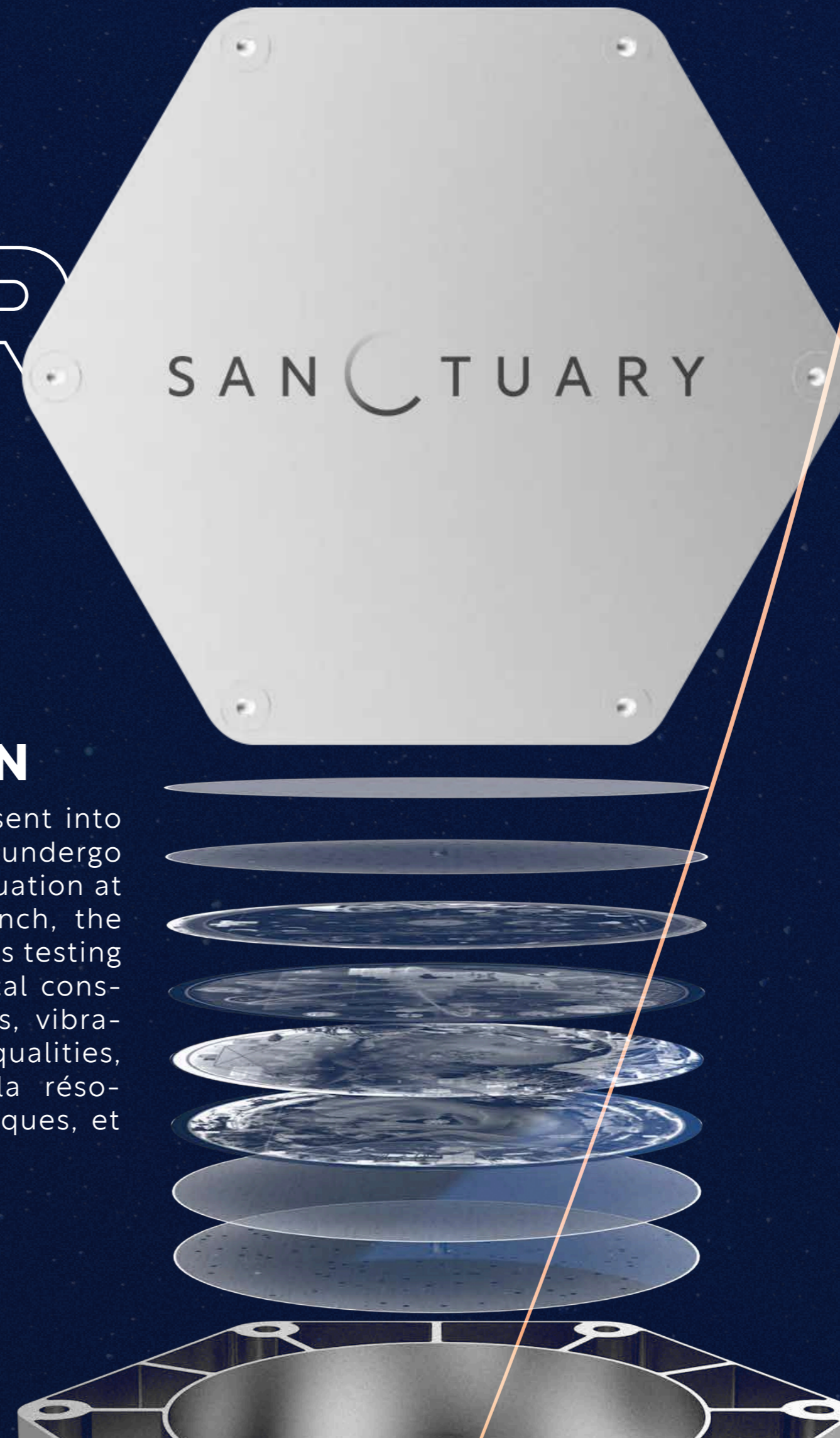
THE SANCTUARY CONTAINER, MADE OF MACHINED ALUMINUM, WILL SERVE AS A REFERENCE POINT FOR THE DATA STORED ON THE DISCS. MOUNTED ON A NASA MOON LANDER, IT WILL BE PHOTOGRAPHED ON THE SURFACE OF THE MOON SHORTLY AFTER LANDING.

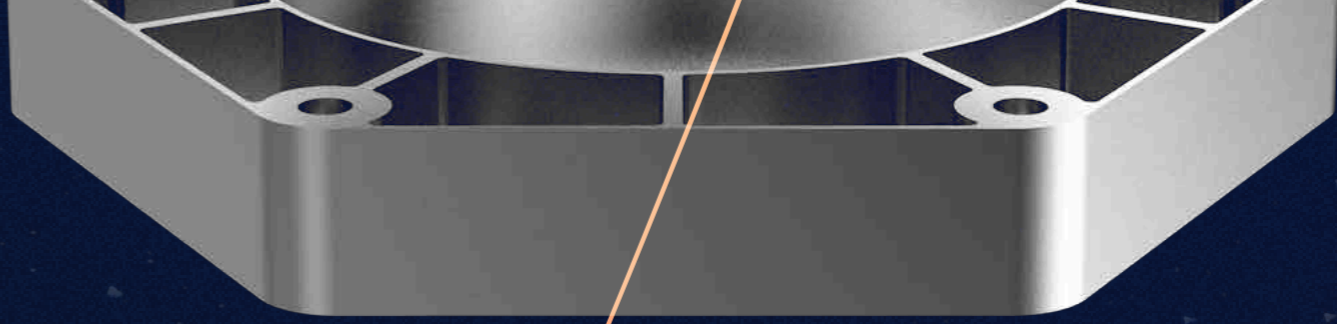
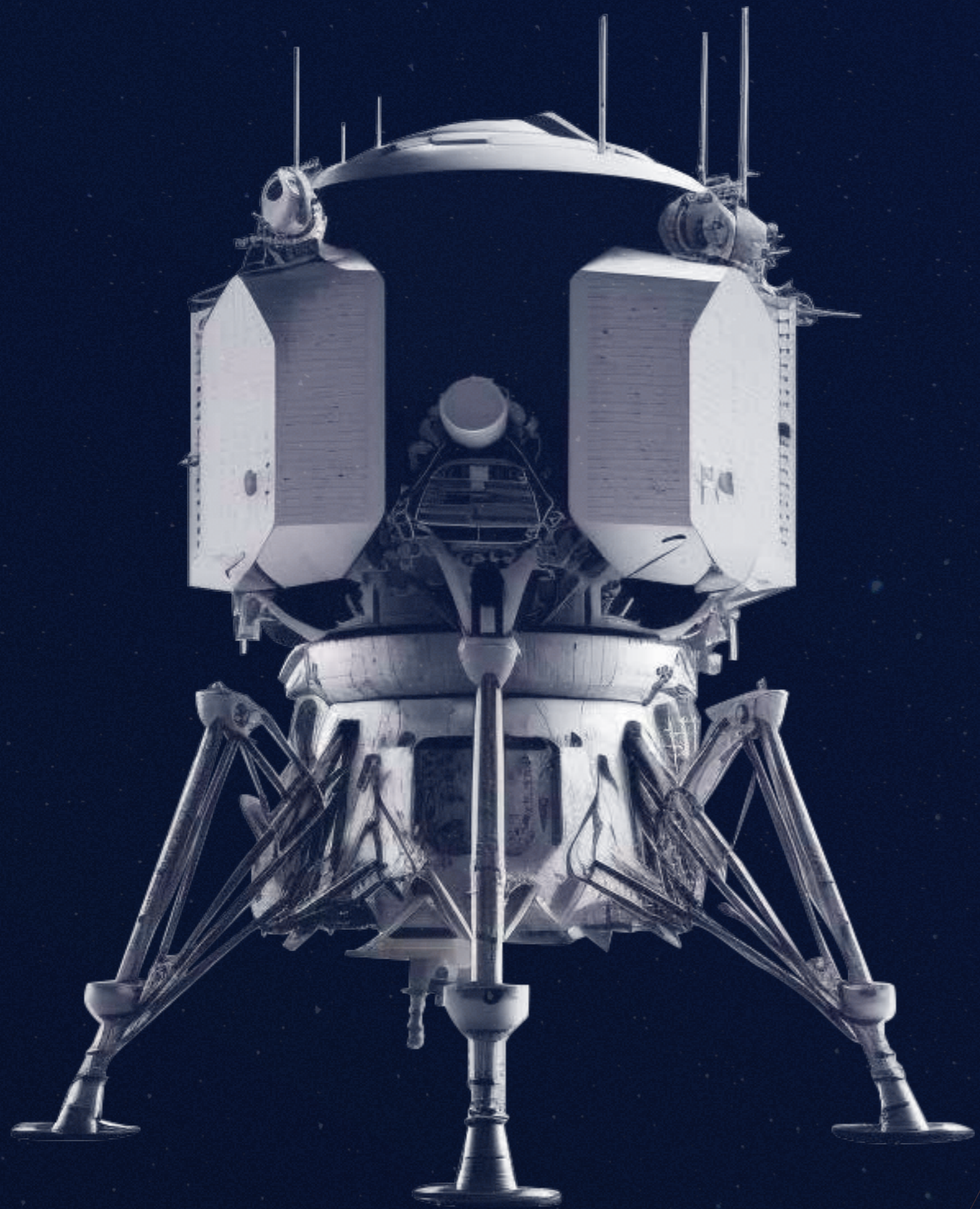
THE MATERIAL

Aluminum has two key advantages: it is lightweight and extremely strong. Our aerospace-grade aluminum alloy, combined with cutting-edge engineering, strikes the right balance between aesthetics, strength, precision, and lightness. The protective box that will store the discs will be stored will undergo slight compression to ensure the vault's integrity for millions of years. The container lid will undergo a deep surface treatment, and laser engraving to provide additional information about its precious contents.

SPACE QUALIFICATION

Not just anything can be sent into space. Materials must undergo repeated, meticulous evaluation at several levels. Before launch, the entire spacecraft undergoes testing for a number of mechanical constraints, including acoustics, vibrations, resonance, thermal qualities, and possible outgassing. la résonance, les qualités thermiques, et un dégazage éventuel.





111,919,295,936	PIXELS
384,400	KM FROM EARTH
1,400	GRAMS
24	DISCS
1	MISSION

OUR AMBASSADORS

SANCTUARY ON THE MOON IS SUPPORTED BY TWO AMBASSADORS. TOGETHER, THEY SYMBOLIZE THE PASSING OF THE TORCH BETWEEN GENERATIONS, REFLECTING **SANCTUARY'S MISSION TO PASS ON HUMANITY'S MOST SIGNIFICANT ACHIEVEMENTS.**

JEAN-FRANÇOIS CLERVOY

ASTRONAUT AND FOUNDER OF AIR ZERO G

A veteran of three space missions aboard the Atlantis and Discovery shuttles, Jean-François Clervoy had a 33-year career as an astronaut and spent a total of 675 hours in orbit. Notably, he participated in the Hubble Space Telescope rescue mission in 1999. Clervoy embodies the legacy of space exploration and stands as a testament to major international collaborations.

"Sanctuary On The Moon symbolizes humanity's ability to extend its presence far beyond its own existence. Designed to last for millions of years, it is the ultimate time capsule. It showcases our most remarkable artistic, scientific, and intellectual achievements. It is a testament to our desire to pass on what is essential, even after we are gone."

ALLAN PETRE

AEROSPACE ENGINEER AND DOCTORAL STUDENT IN SPACE ENGINEERING

Allan Petre represents the next generation of aerospace engineers. He began his career at NASA, taking a rare and inspiring path. He has distinguished himself at the Jet Propulsion Laboratory. His unique career path has been recognized at the highest levels of government, earning him praise from the President Emmanuel Macron. Today, Allan is actively involved with younger generations, conveying a powerful message: With determination and high standards, no dream is unattainable.

"The Sanctuary On The Moon project is not a machine, but a memory. It is an eternally engraved trace that says, We existed, we thought, and we explored. May those who discover it find the inspiration to look beyond their own time and remember that humanity has always evolved by daring to look beyond its own celestial body."



THE COMPETITION

« CHILDREN OF PLANET EARTH »

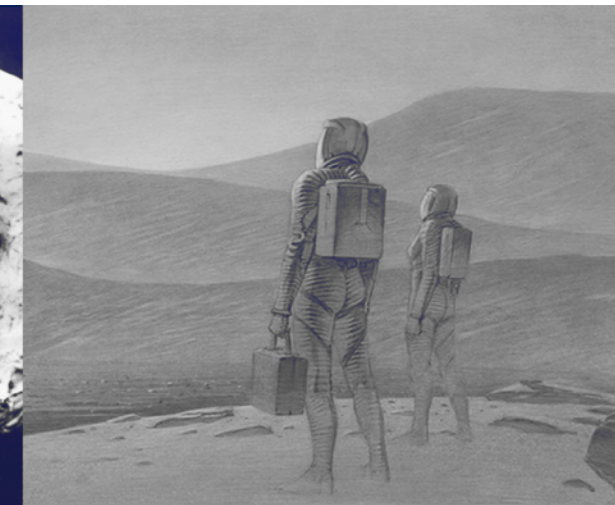
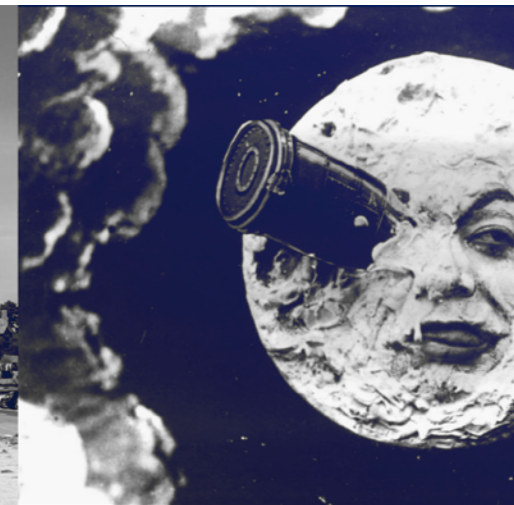
The first act of the “WHAT WE MAKE” phase: the “CHILDREN OF PLANET EARTH” art competition, launched in partnership with the French National Commission for UNESCO.

Students from kindergarten through high school are invited to express their vision of humanity through art. Selected works will be engraved on discs and sent to the moon by 2030. This initiative gives children a voice and preserves their perspective for future generations.

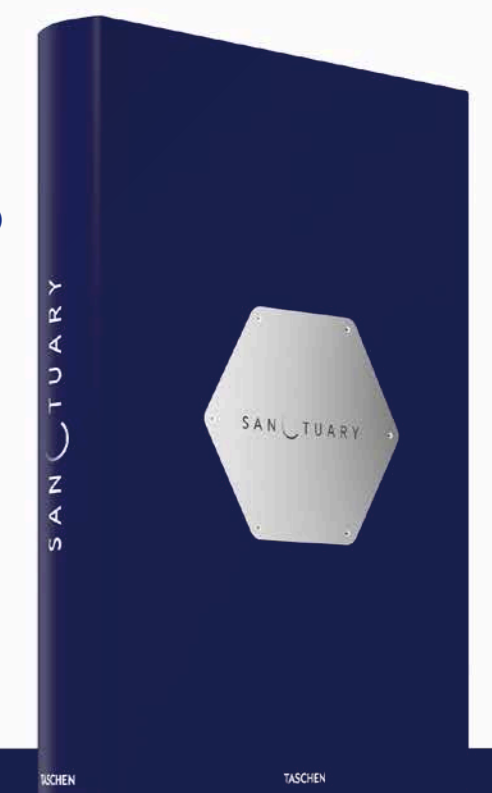
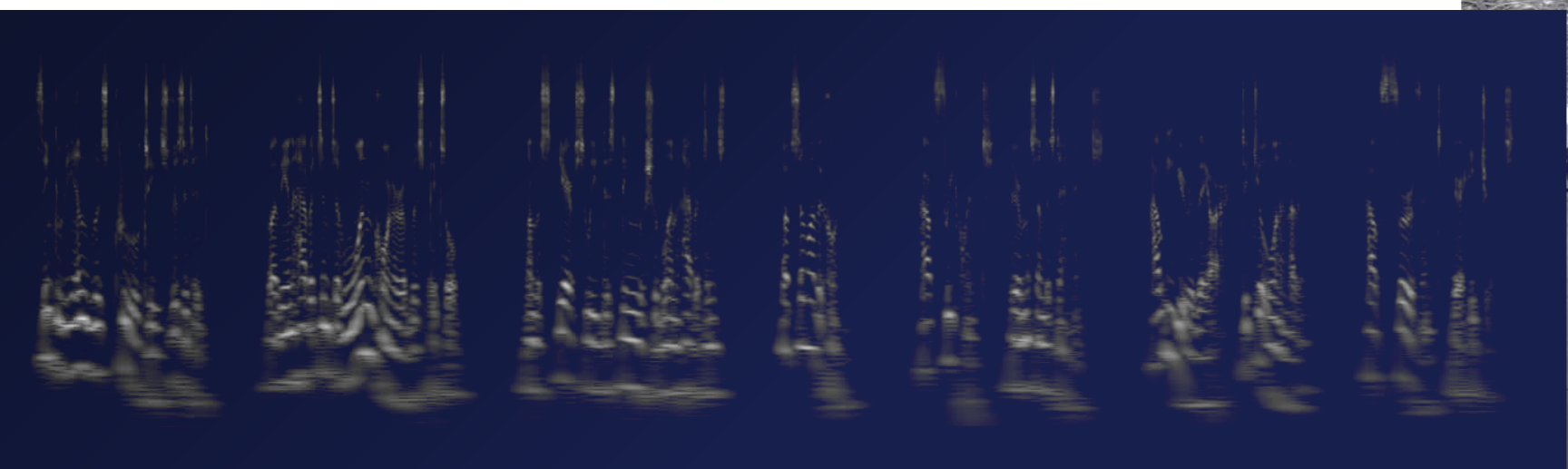
THREE THEMES ADAPTED TO EACH LEVEL:« DESSINE-MOI LA
“DRAW ME THE EARTH” (PRESCHOOL AND ELEMENTARY SCHOOL)
“TRACES OF OUR HUMANITY” (MIDDLE SCHOOL)
“WHAT IS THE FUTURES OF OUR HUMANITY?” (HIGH SCHOOL)

THE PROJECT WILL ALSO TAKES PLACE ON EARTH

OUR AMBITION IS TO SHARE
THE KNOWLEDGE ENGRAVED
ON THE DISCS THROUGH
EXHIBITIONS, CONCERTS,
AND DOCUMENTARIES.



WE ARE CURRENTLY WORKING ON INTERNATIONAL
ARTISTIC COLLABORATIONS TO REPRESENT AND
BRING TO LIFE THE CULTURES OF ALL CONTINENTS.
AT THE SAME TIME, WE ARE DEVELOPING PARTNER-
SHIPS WITH AUTHORS, DIRECTORS, COMPOSERS AND
ARTISTS FROM AROUND THE WORLD.

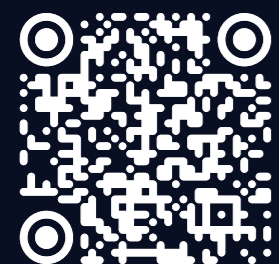


OUR TEAM

SCIENTISTS, PARTICLE PHYSICISTS, ENGINEERS, ASTROPHYSICISTS, GRAPHIC ARTISTS, CARTOGRAPHERS, PALEONTOLOGISTS, AND MORE.

THE SANCTUARY TEAM IS MADE UP OF A DIVERSE GROUP OF HIGHLY QUALIFIED INTERNATIONAL EXPERTS.

Discover the entire Sanctuary On The Moon team:





“ IT IS A GOOD THING TO SPEAK ABOUT THE FUTURE. IT WILL LISTEN. ”

MAXIM BY PTAHHOTEP, ANCIENT EGYPT, 25TH CENTURY BC.



PRESS CONTACT



WISSAM **HARROU**

wissam@sanctuaryonthemoon.com

+33 7 67 39 90 16

SANCTUARY



[SANCTUARYONTHEMOON.COM](https://sanctuaryonthemoon.com)

